



# ABIMCI

Brazilian Association for  
Mechanically Processed Timber



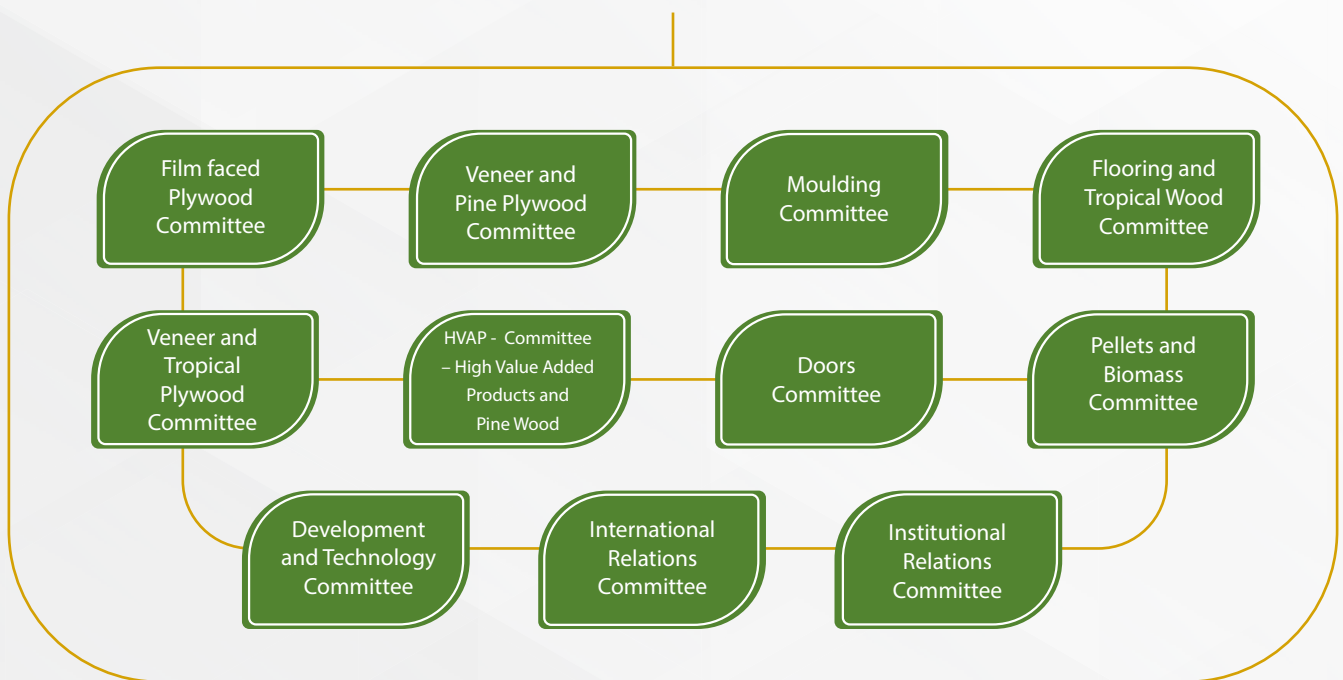
# Abimci

It has been almost five decades since the Brazilian Association for Mechanically Processed Timber (Abimci) started representing the Brazilian timber and forestry industry. A work supported by several areas of expertise to defend the interests of the industry, as well as business promotion and institutional articulation.

The members access strategic contents for decision making, data and market overviews and guidance to meet technical standards and high quality. Abimci represents their members nationally and internationally, promoting the Brazilian timber product.

The Abimci's activities include defense of interests in areas such as taxes, logistical barriers, the legislative agenda and guidelines affecting the industry. The association also maintains a constant interface with the Federal Government to discuss issues and priority demands.

# Sectorial Committees



## Major Actions

- » Defending the interests of the timber industry
- » Improving the timber industry's competitiveness
- » Contributing to a better performance for Brazilian timber exports
- » Expanding the certification of products and promoting the improvement and development of technical standards
- » Encouraging sustainable practices and transparency

# Work Fronts

## Institutional and commercial

- » Sectorial and plenary meetings
- » Participation in in Congresses, Seminars, National and International Workshops
- » Realization of Wood Trade Brazil
- » Development and promotion of the International Wood Week agenda
- » Realization of the Wood Door Production Chain Meeting (ENCAPP)
- » Support to national and international sectorial events
- » Promotion of technical and commercial missions
- » Institutional partnerships with representative entities
- » Promotion of international business missions
- » Actions against logistical barriers
- » Encouragement for the use of wood in construction and other segments

## Content and Information

- » Sectorial Study
- » Statistical data of monthly exports
- » Market overviews
- » Abimci News
- » Technical and promotional brochures
- » Portas de Madeira Magazine
- » Members-only website area for exclusive content
- » Public relations

# Defense of Interests

- » Guidelines and themes: tax, economy, lawmaking, labor, international trade, court system, logistics and infrastructure
- » Interface with public authorities at federal and state levels
- » Monitoring of the legislative and executive agenda on matters of interest to the industry
- » Partnerships with the Brazilian Confederation of Industry (CNI) and State Federations of Industry, Ministries, autarchies and technical government bodies
- » Legal actions against the interruption of official services

## Corporate Coalitions

Abimci, as a representative of the timber industry in Brazil, is a member of coalitions that bring together the main entities of the country, in order to discuss and propose solutions for the economic and sustainable development of business activities and, timber sector of Brazil.

### Coalition for Construction

It aims at enhancing actions focused on the recovery of civil engineering, which is one of the most important segments for the whole timber production chain.

### Brazilian Corporate Coalition (CEB)

It follows up international negotiations, especially processes of commercial integration in which Brazil is involved, thus seeking better conditions for competitiveness and equality of national products in the foreign market.

### Corporate Coalition for Trade and Barriers Facilitation (CFB)

It aims to contribute to public policies to support the Brazilian foreign trade. It prepares recommendations to modernize and accelerate import and export procedures in Brazil, in addition to fighting against trade barriers.

### Brazil Climate, Forestry and Agriculture Coalition

Multi-sectorial movement, composed of entities leading the agribusiness in Brazil and major civil organizations in environment and climate, which aims to address issues arising from climate change under the perspective of a new economy.

# Technical Area

## Programs and certifications

Abimci develops quality and certification programs to provide associated companies with the tools to improve processes and product performance, thus ensuring access to markets that impose such commercial requirements.



### PNQM

The National Wood Quality Program (PNQM) is a quality management tool that provides structure for standardization and control of the production process in companies, from the delivery of raw materials and inputs to packaging and shipping of the final product.



### CE Marking

The “CE” mark imposed by the European Community requires the manufacturer and its products to meet the EN standard requirements through the regulation of construction products CPR (305/2011), governed by the standard EN 13986 +A1: 2015, accepted by the 28 countries in the European Union.

Abimci has a subcontracting agreement with Exova BM Trada, English certification body, which enables the CE certification for structural wood panels in Brazil.



### PSQ-PME

The Sectorial Program for Quality of Wooden Doors for Buildings (PSQ-PME) aims to generate competitiveness for Brazilian products, open new markets, encourage a continuous improvement, add value to brands, protect the domestic market and also the final consumer.

Through PSQ-PME, it is possible to get the certification for wooden doors according to ABNT NBR 15930-2 - Wooden Doors for Buildings - Requirements.

To know about certified products, visit [www.psqportas.com.br](http://www.psqportas.com.br).

# Standardization

Abimci is the managing body of the Brazilian Timber ABNT Committee (CB-31), through which it coordinates, plans and holds technical standardization activities of wood products in Brazil, providing support to the Study Commissions (EC) that compose the committee.

The Study Commissions develop technical standards with the purpose of consensually setting rules, guidelines or minimum characteristics for products and/or activities, in order to obtain a market standardization and meet intended purposes.

## Study Commissions comprising the Brazilian Timber Committee - CB-31

- > CE 31.000.02 – Sawnwood
- > CE 31.000.05 – Plywood
- > CE 31.000.07 – Wood Fiber Board
- > CE 31.000.10 – Wood for Spool
- > CE 31.000.11 – Treated Wood Posts for Fencing
- > CE 31.000.12 – Wooden Doors
- > CE 31.000.13 – Solid Wood Flooring
- > CE 31.000.14 – Treated Wood
- > CE 31.000.15 – Wood Treatments
- > CE 31.000.16 – Treated Eucalyptus Roundwood Crossbar
- > CE 31.000.17 – Treated Eucalyptus Pole
- > CE 31.000.18 – Particleboard
- > CE 31.000.19 – Wood Fiber Hardboard

## Civil construction

The Light Wood Framing code, developed under ABNT, is led by Abimci and provides technical requirements to apply this technology for the construction of buildings with up to two floors.

The consolidation of the wood frame system represents a great potential for the commercial development of several wood products and a real possibility of increasing the per capita consumption of timber in the civil engineering industry. This system, industrialized and a reality in other countries, is a viable solution to meet the current and growing housing demands in Brazil.



# ABIMCI

Abimci – Brazilian Association for Mechanically Processed Timber

Avenida Comendador Franco, 1341 – Campus  
da Indústria – Jardim Botânico

CEP 80215-090 – Curitiba – Paraná – Brasil

(41) 3225-4358 • [abimci@abimci.com.br](mailto:abimci@abimci.com.br)

[www.abimci.com.br](http://www.abimci.com.br)